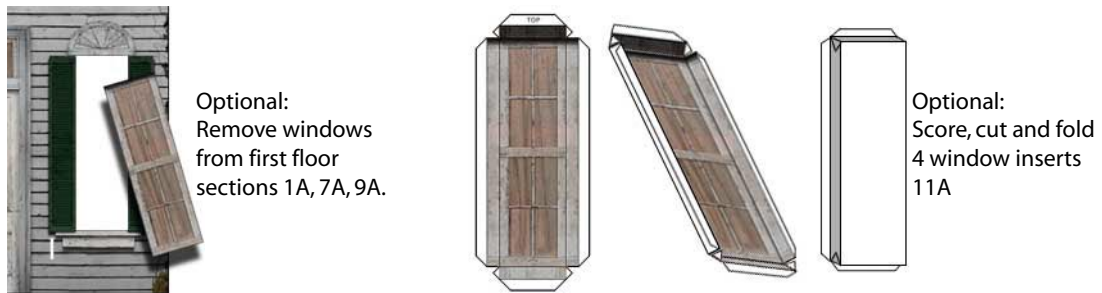
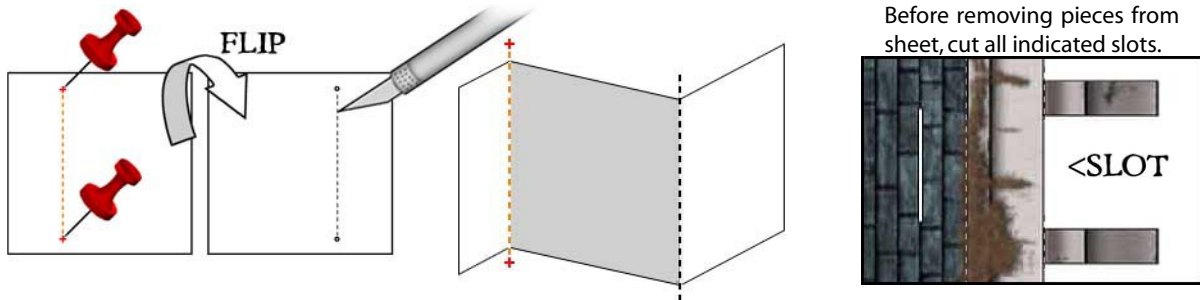


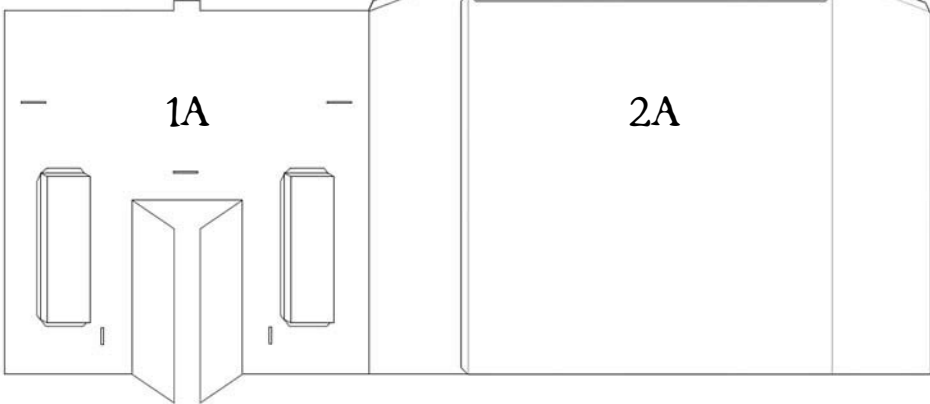


Please note that this project is not recommended for children. It requires a moderate degree of skill, and the use of a cutting blade, which is extremely dangerous. When using cutting blades always use protective eyewear. Color printing is recommended. This model was designed to be printed on Matte Paper Heavyweight, and the use of white glue is recommended.

There are many folds in the model, and it is recommended that you score the fold first, using a dull cutting blade, or other fine, blunt tipped instrument. Black dashed lines represent a mountain fold (a fold which point upward), and orange dashed lines represent a valley fold (the fold points downward). The orange dashed lines are accompanied by a red "+" at each end. These are to be used as pin guides, so you can poke small holes at the "+", flip the sheet over, and score between the holes for a clean valley fold. Read the instructions and study the illustrations carefully before beginning.



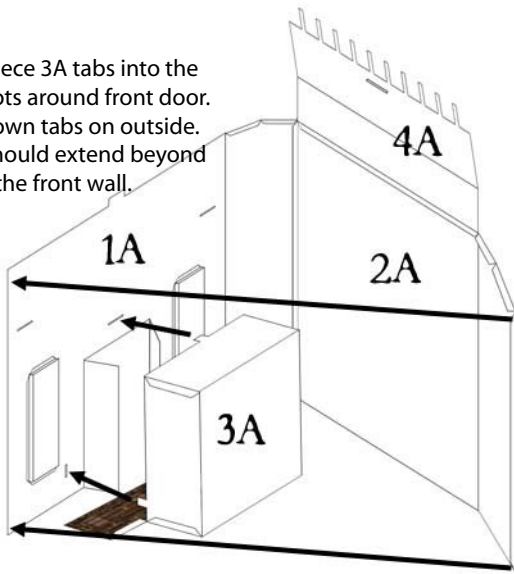
1A, 2A, 4A shown face down and glued along tab edges.  
Glue window inserts in place.



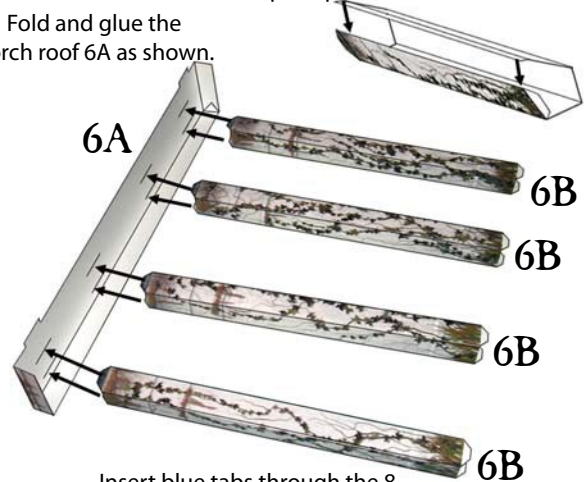
Fold and glue 3A as shown.



Slide piece 3A tabs into the rear 3 slots around front door.  
Glue down tabs on outside.  
Porch should extend beyond the front wall.



Fold and glue the porch roof 6A as shown.  
Fold and glue the 4 pillar pieces 6B.



Insert blue tabs through the 8 slots in the porch roof 6A. Fold down and glue pillar tabs.



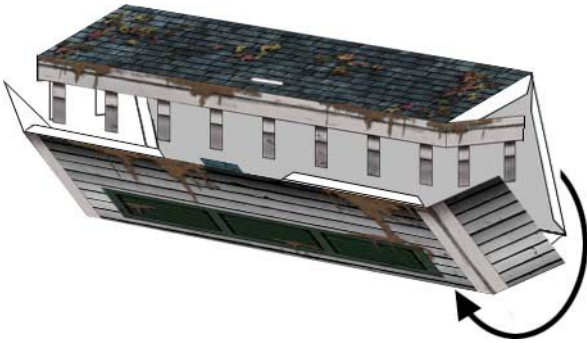
Fold down the roof 4A.  
Insert front tab into roof slot.  
Glue roof to side tabs.

Fold down tabs.

Insert porch tabs into slots of the front wall, and glue the bottom of the pillars within the squares on the porch.

Fold down tabs.

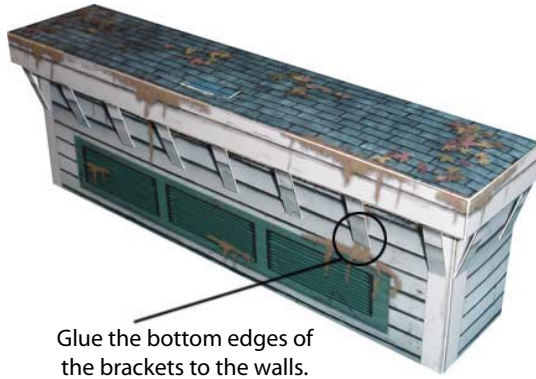
Fold and glue cupola piece 5B as shown.



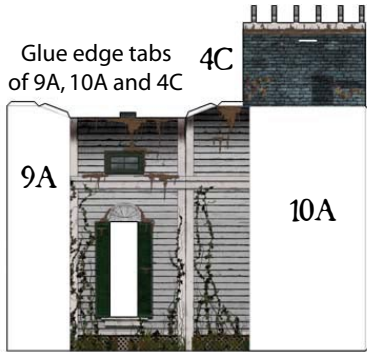
Glue cupola piece 5B to dark rectangular area on the roof as shown.



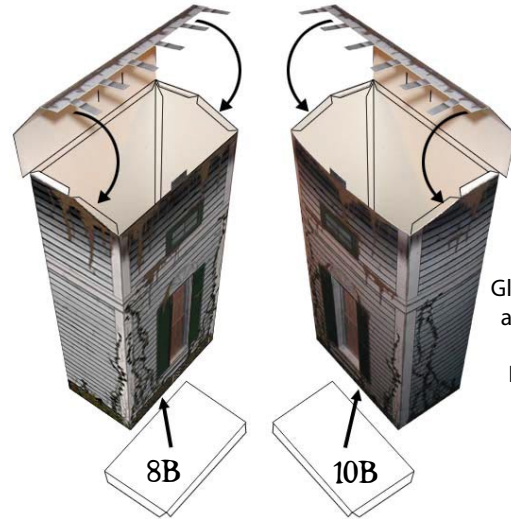
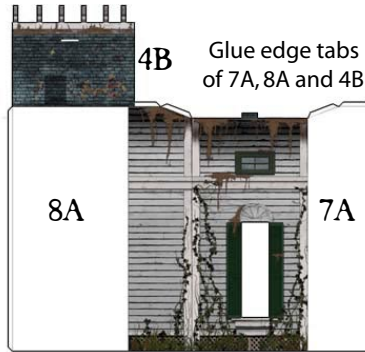
Glue the bottom edges of the brackets to the walls.



Glue edge tabs of 9A, 10A and 4C



Glue edge tabs of 7A, 8A and 4B



Glue roof to side tabs and insert front tab through slot. Insert floor pieces 8B and 10B up into bottoms.

11Cx2



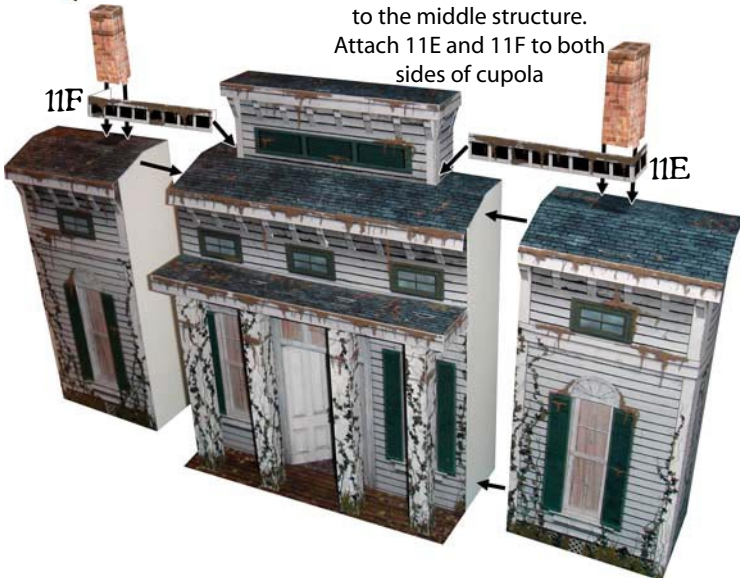
11Dx8

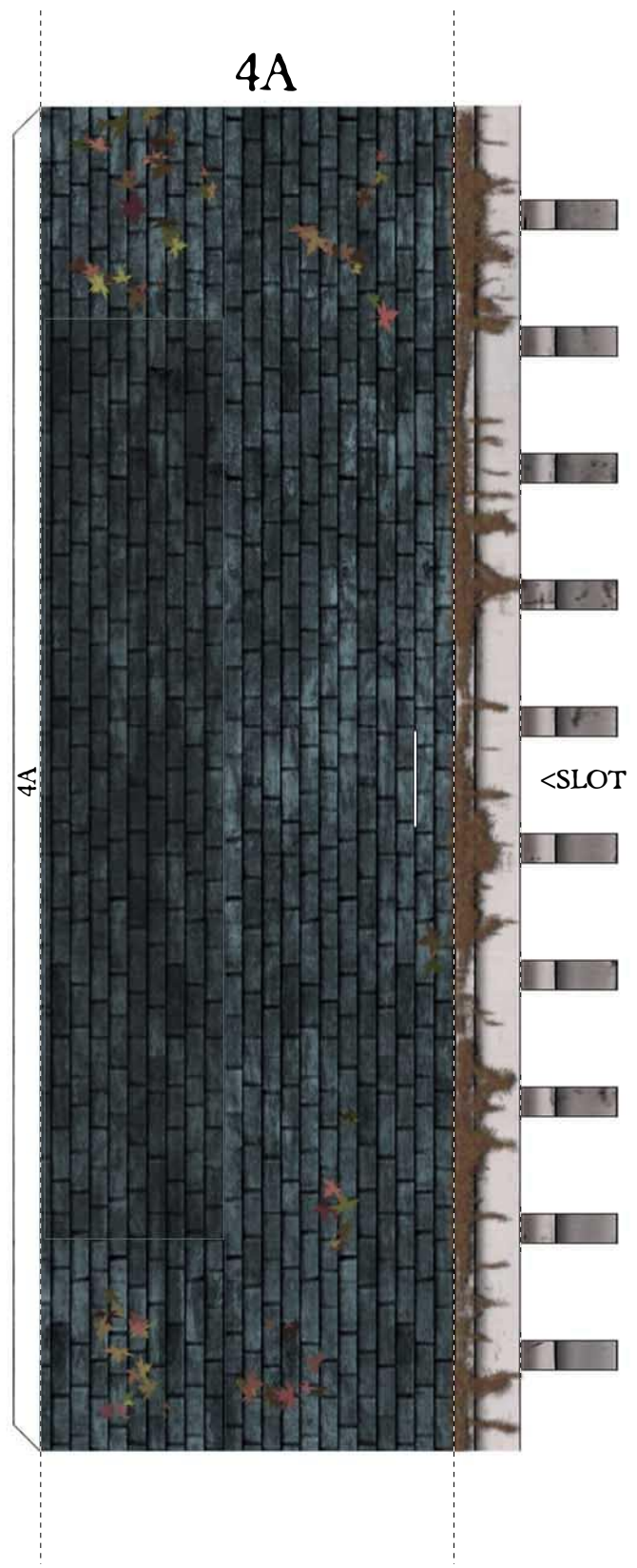
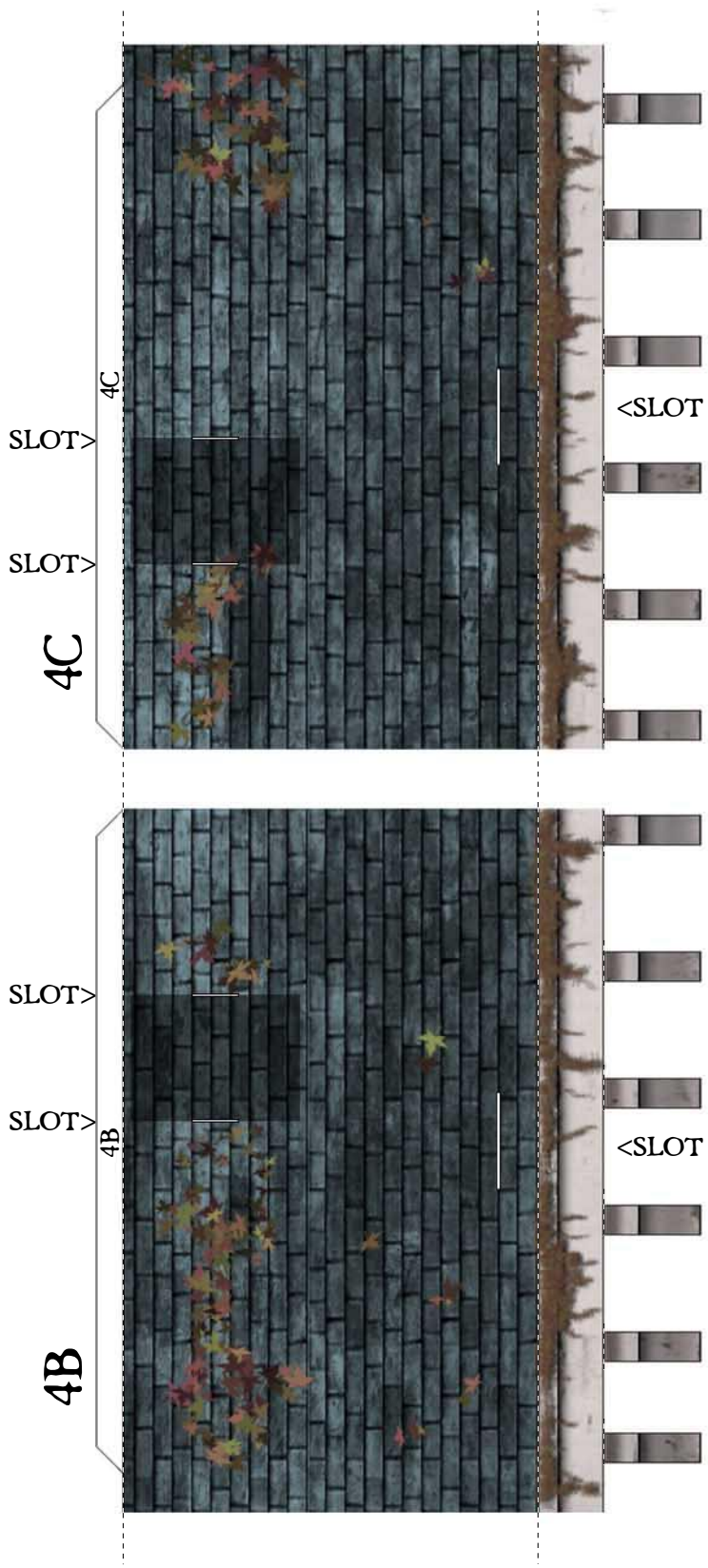


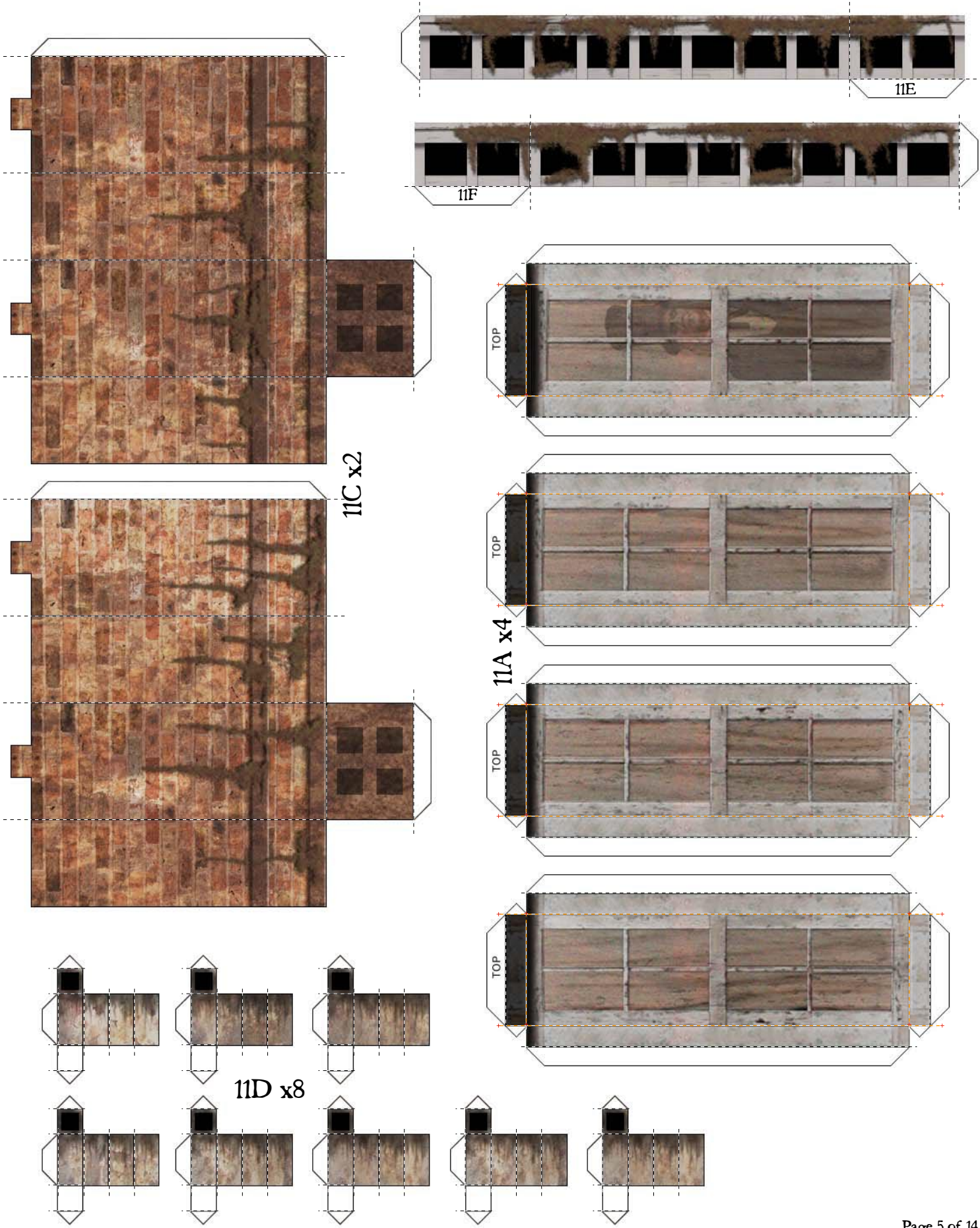
Fold and glue 8 chimney stacks 11D as shown and glue to squares on top of chimneys.

Fold and glue 2 chimney pieces 11C as shown. Insert chimney tabs into roof slots.

Glue left and right sections to the middle structure. Attach 11E and 11F to both sides of cupola





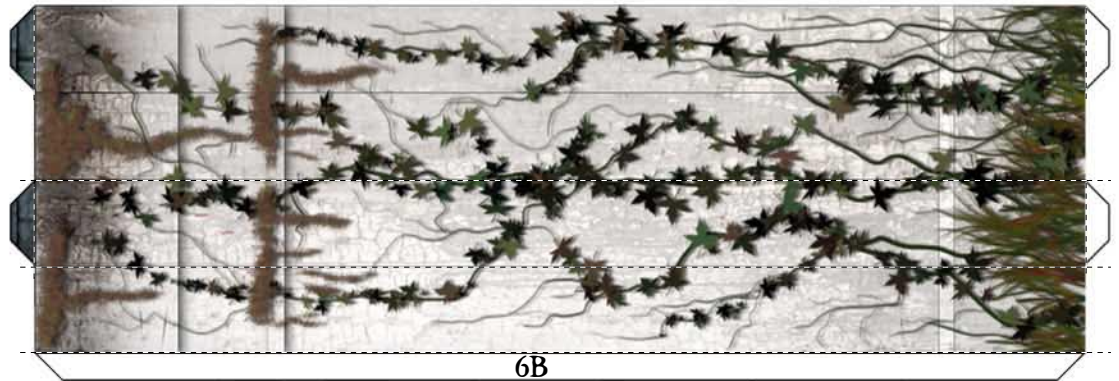


6A

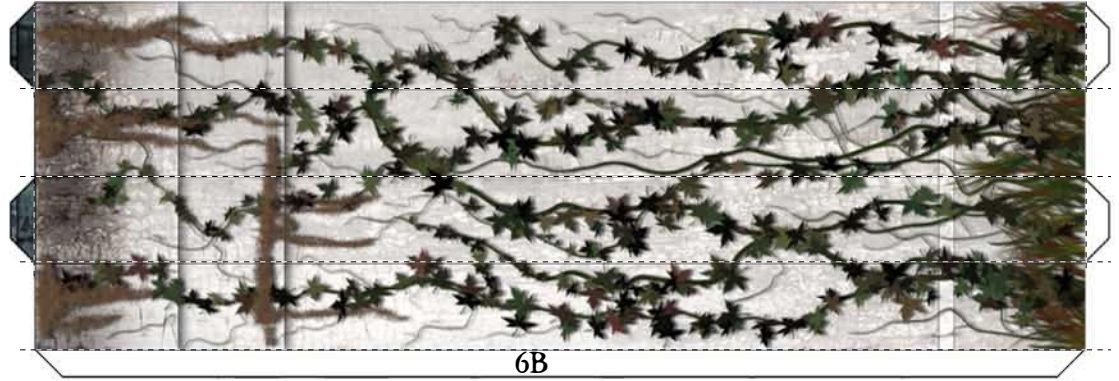
6B x 4



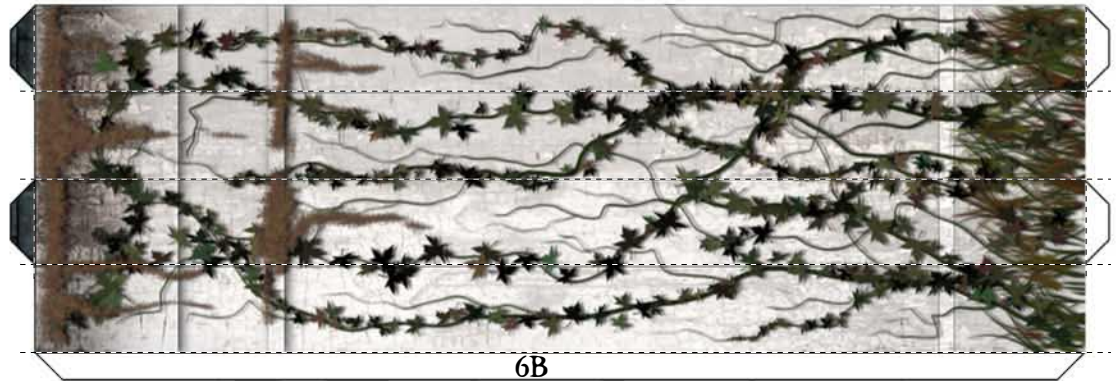
8 SLOTS



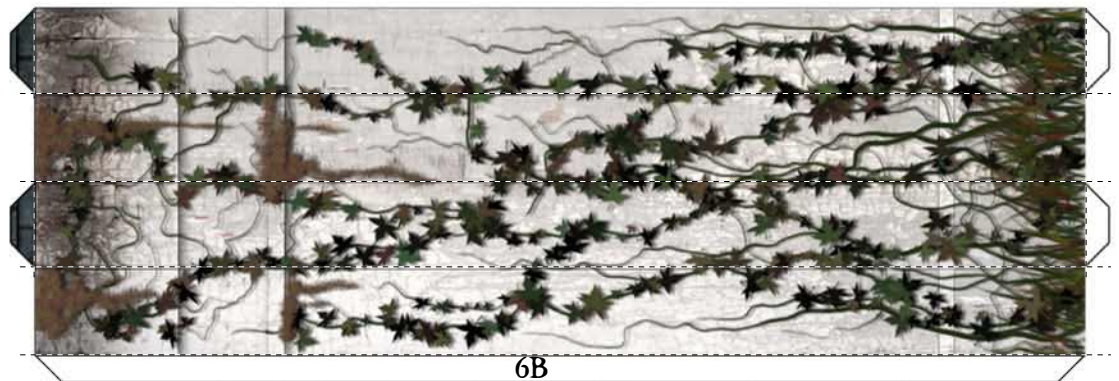
6B



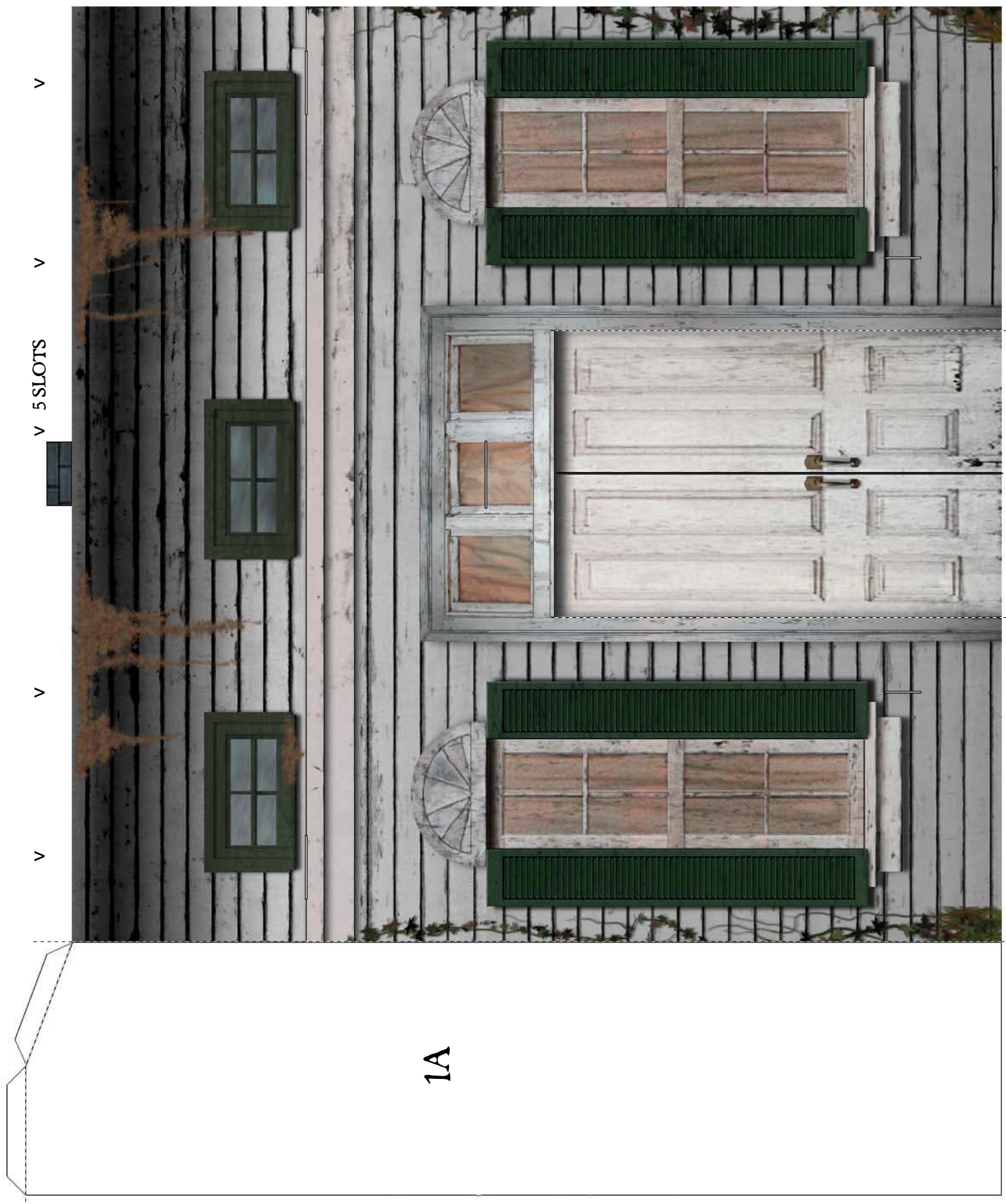
6B



6B



6B



1A



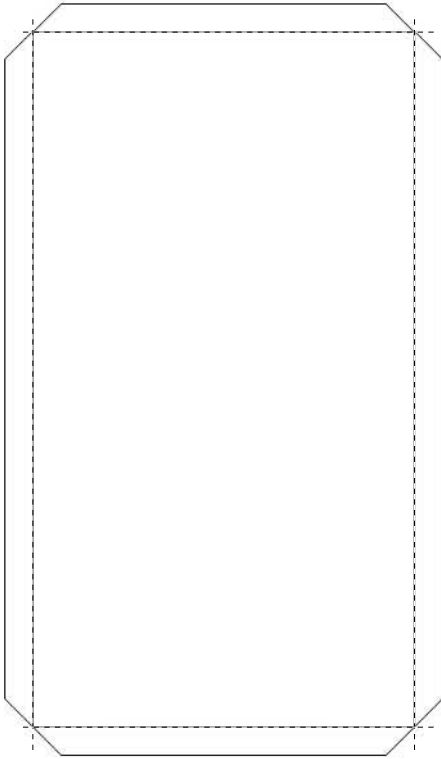
2A



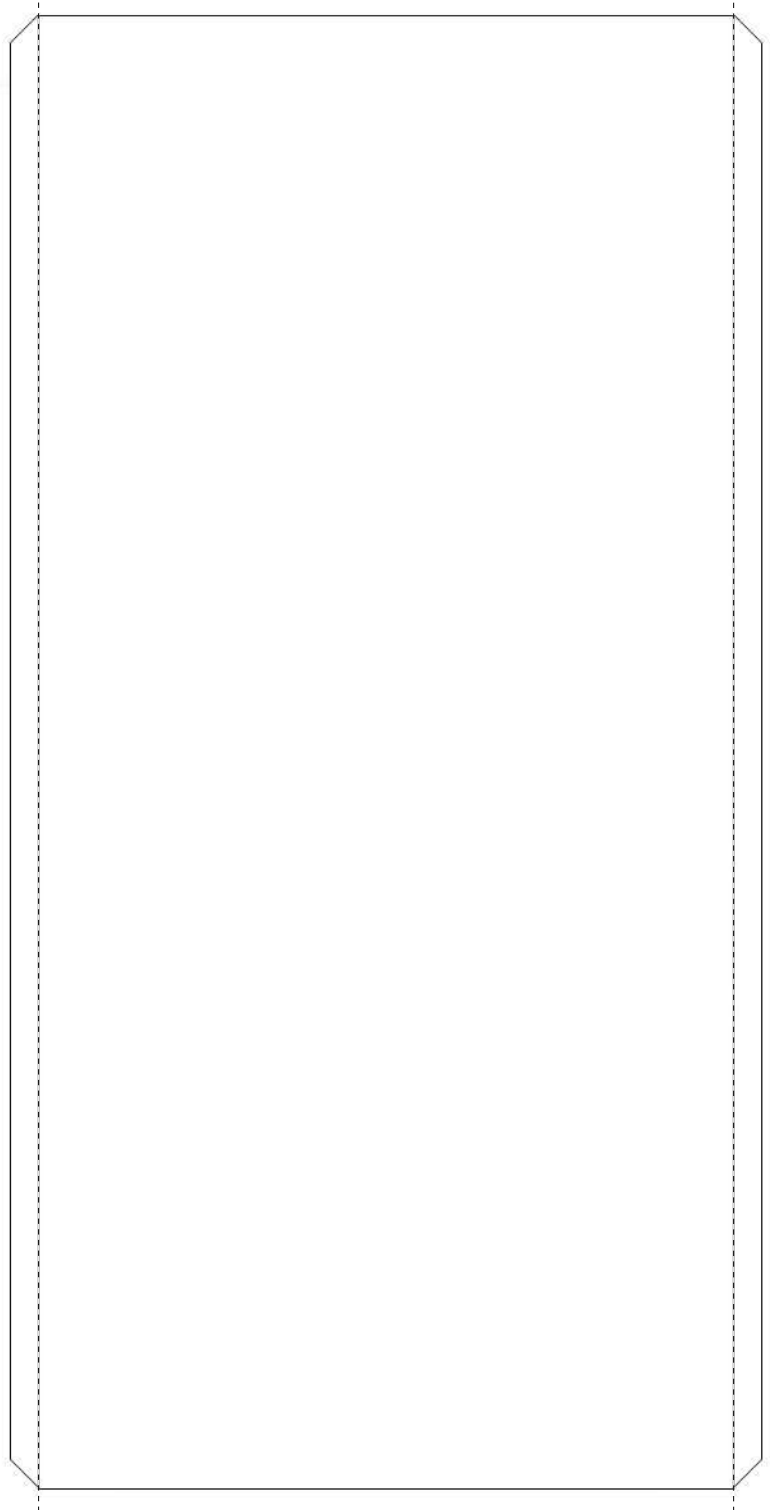


7A

8B



8A





3A



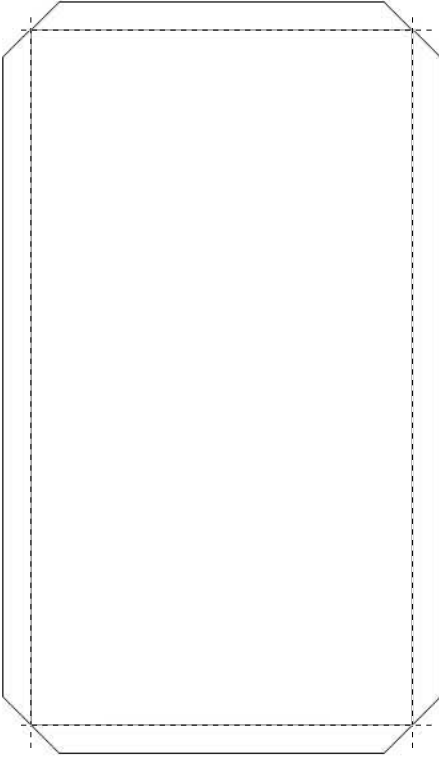
5B



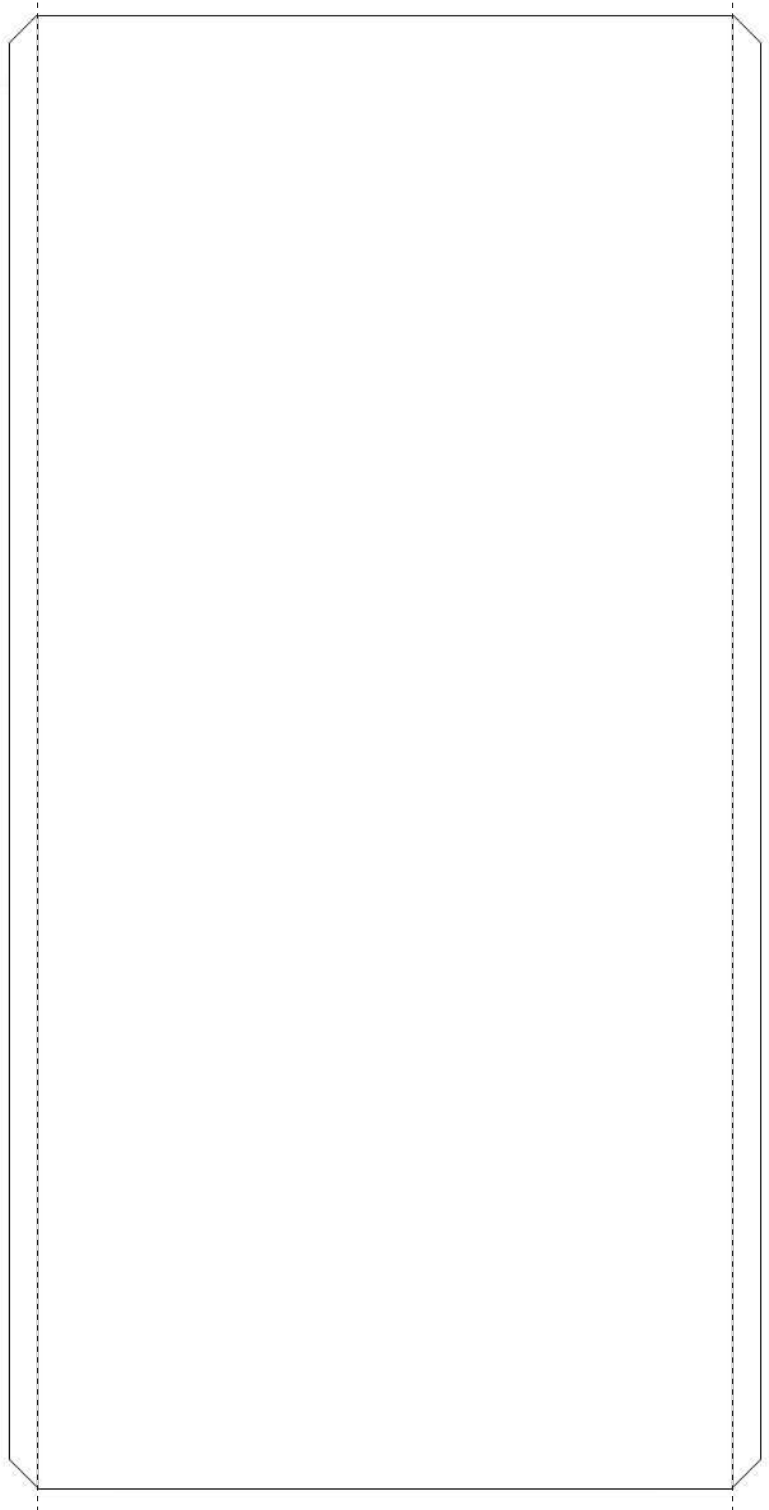
1 SLOT >

5A

**10B**



**10A**



9A

