

Universal's  
HALLOWEEN  
HORROR  
NIGHTS  
SWEET 16

Shady Brook Hospital has been plagued with rioting inmates off and on for years. These small incidents of chaos have always been resolved quickly and contained with minimal casualty. However, Shady Brook's newest resident is about to change all that.

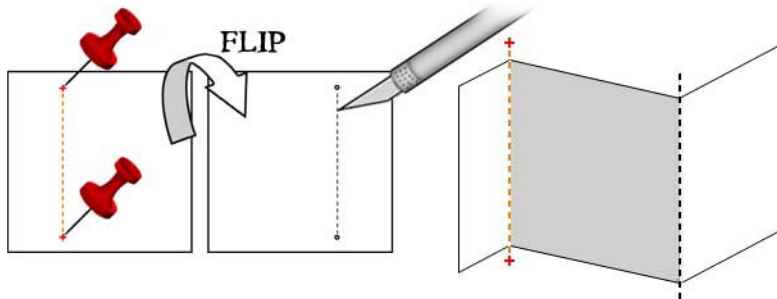
If you think you know insane,  
You don't know Jack.

Step inside an asylum where the sideshow is death and the "big top" has padded walls.

PsychoScareapy  
MAXIMUM MADNESS

Please note that this project is not recommended for children. It requires a moderate degree of skill, and the use of a cutting blade, which is extremely dangerous. When using cutting blades always use protective eyewear. Color printing is recommended. This model was designed to be printed on Matte Paper Heavyweight, and the use of white glue is recommended.

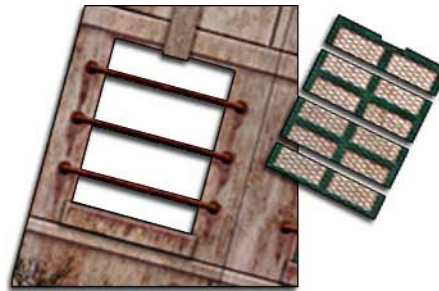
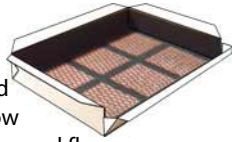
There are many folds in the model, and it is recommended that you score the fold first, using a dull cutting blade, or other fine, blunt tipped instrument. Black dashed lines represent a mountain fold (a fold which point upward), and orange dashed lines represent a valley fold (the fold points downward). The orange dashed lines are accompanied by a red "+" at each end. These are to be used as pin guides, so you can poke small holes at the "+", flip the sheet over, and score between the holes for a clean valley fold. Read the instructions and study the illustrations carefully before beginning.



Before removing pieces from sheet, cut all indicated slots.



Optional:  
Score, cut and fold  
6 first floor window  
inserts 4A and 7 second floor  
window inserts 9E.

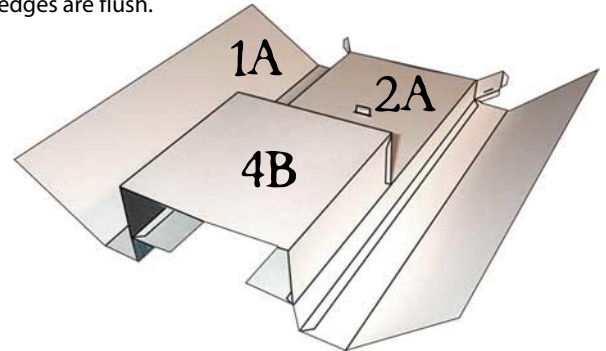


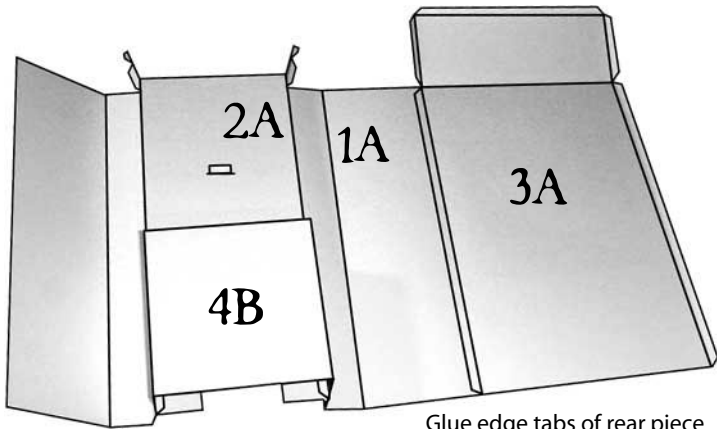
Optional:  
Remove windows from  
sections 2B, 5A and 7A  
as shown, leaving the bars.

Glue piece 2A into entry  
section 1A, inserting the tab  
on 1A into slot on 2A. Align  
and glue side tabs to be flush  
with edges of 1A entry door.



Fold and attach inner room  
piece 4B as shown and glue  
behind entry section 2A, making sure  
edges are flush.

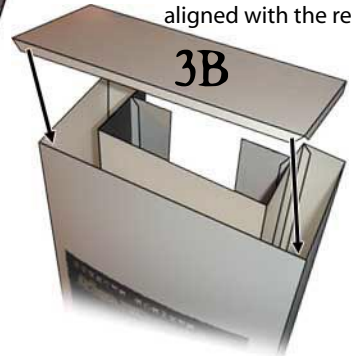




Glue edge tabs of rear piece 3A to 1A.

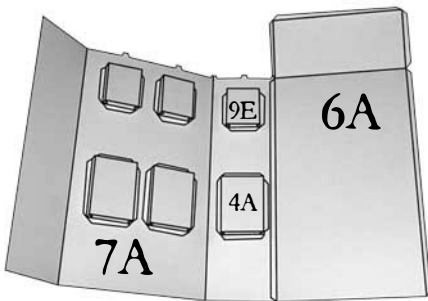


Fold down and glue roof section of 3A, with tabs inside and top flush with top edges. Also fold down and glue the 2 smaller roof sections.

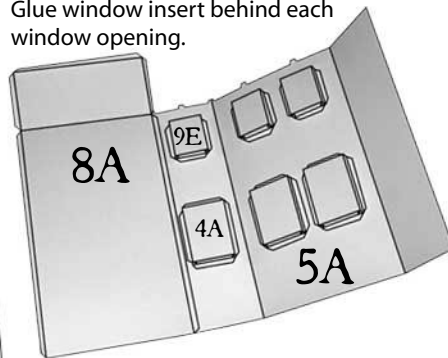


Glue floor section 3B into the bottom of the entry section, with long tab aligned with the rear edge.

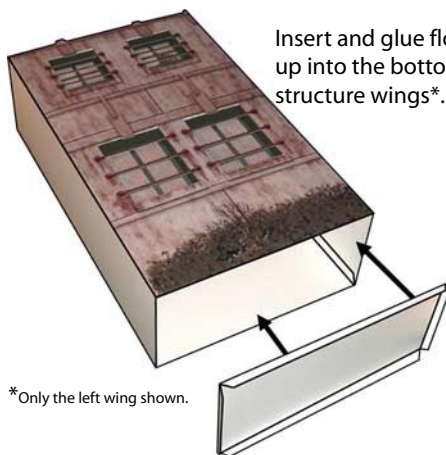
Align and glue the edge tab of rear piece 6A to 7A. Glue window insert behind each window opening. Windows 9E on second floor and 4A on first floor.



Align and glue the edge tab of rear piece 8A to 5A. Glue window insert behind each window opening.



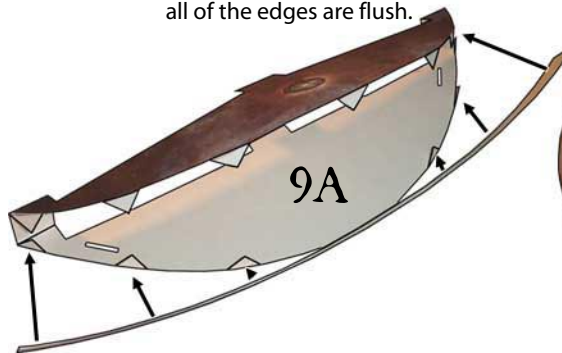
Align and glue the edge tabs of rear pieces to front pieces. Fold down and glue roof sections flush with top edges.



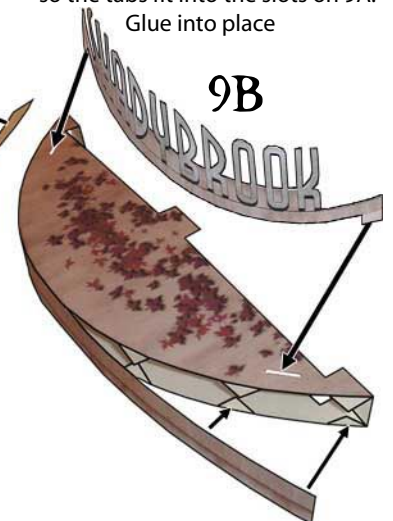
Insert and glue floor sections 8B and 6B up into the bottoms of the left and right structure wings\*.

\*Only the left wing shown.

Fold porch section 9A as shown. Carefully glue the front strip to the triangles, being sure that all of the edges are flush.

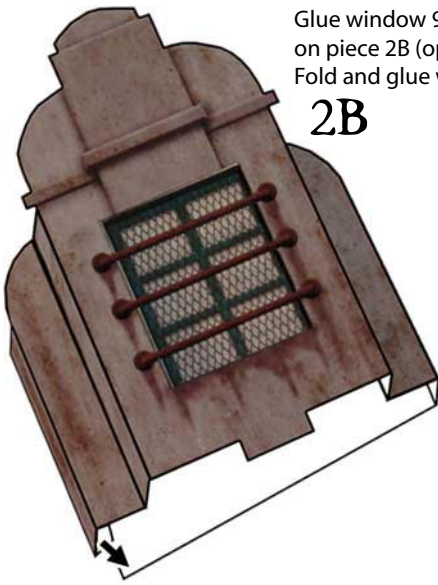


Gently bend the lettering 9A so the tabs fit into the slots on 9A. Glue into place



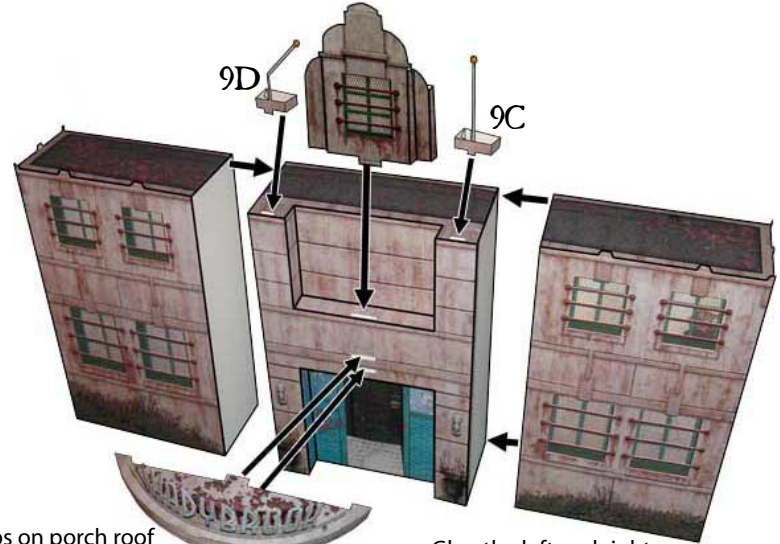
Glue window 9E behind window opening on piece 2B (optional).  
Fold and glue window 2B as shown.

**2B**



Glue window 2B into slot on the ledge above the front entryway.  
Insert tabs on bottom of flagpole pieces 9C and 9D into slots on top edges.

**2B**



Glue tabs on porch roof into the slots above the front entry.

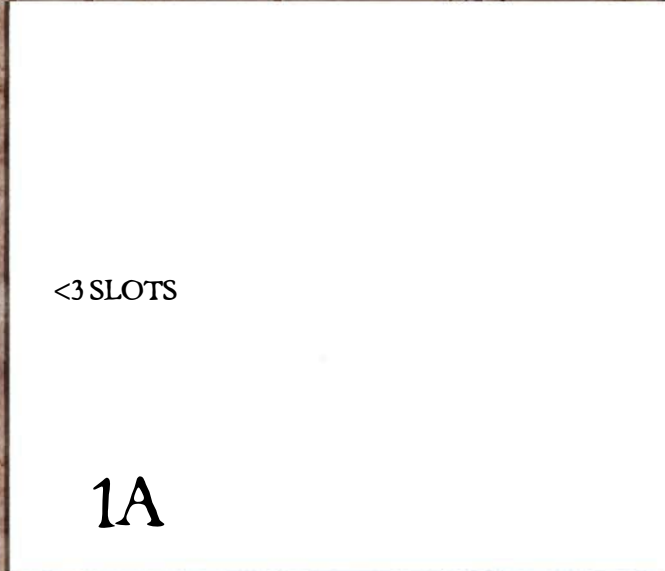
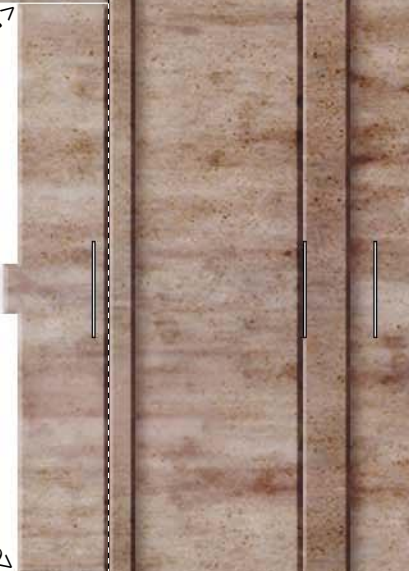
Glue the left and right structural wings to the central structure. Align the REAR edges. The central structure should extend from the front.





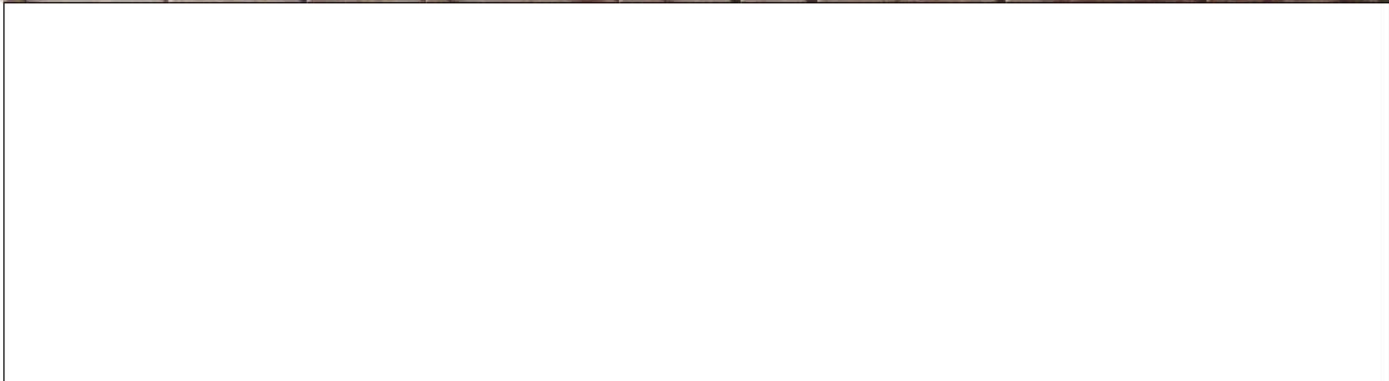
CUT SLOT TO DOTTED LINE →

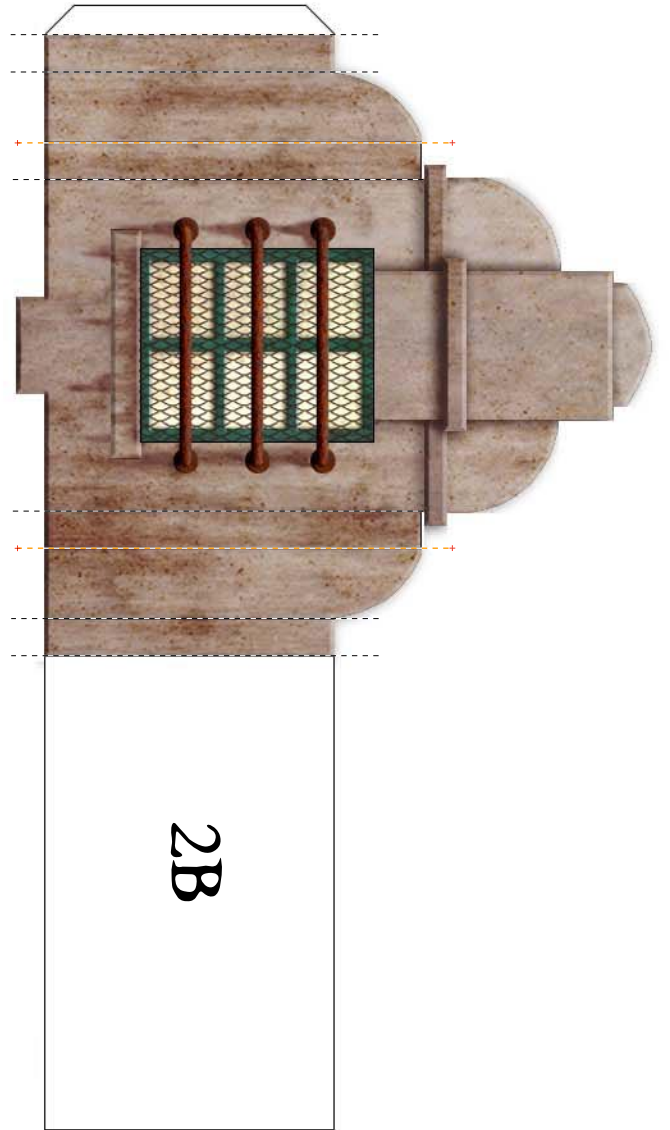
← CUT SLOT TO DOTTED LINE



<3 SLOTS

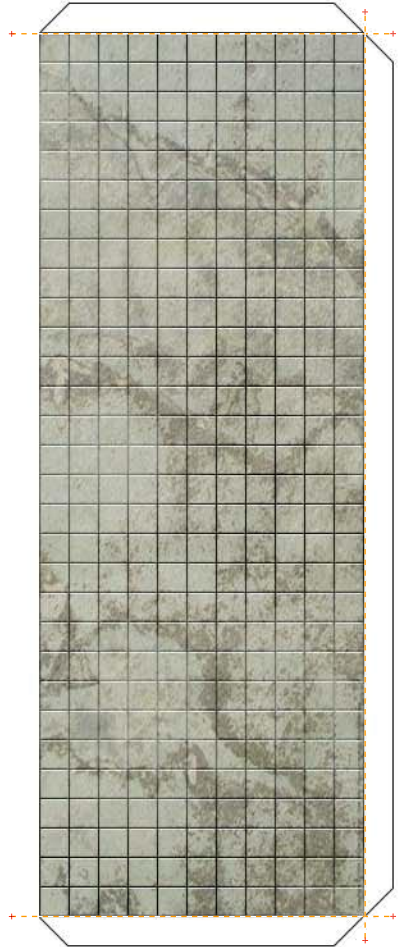
1A





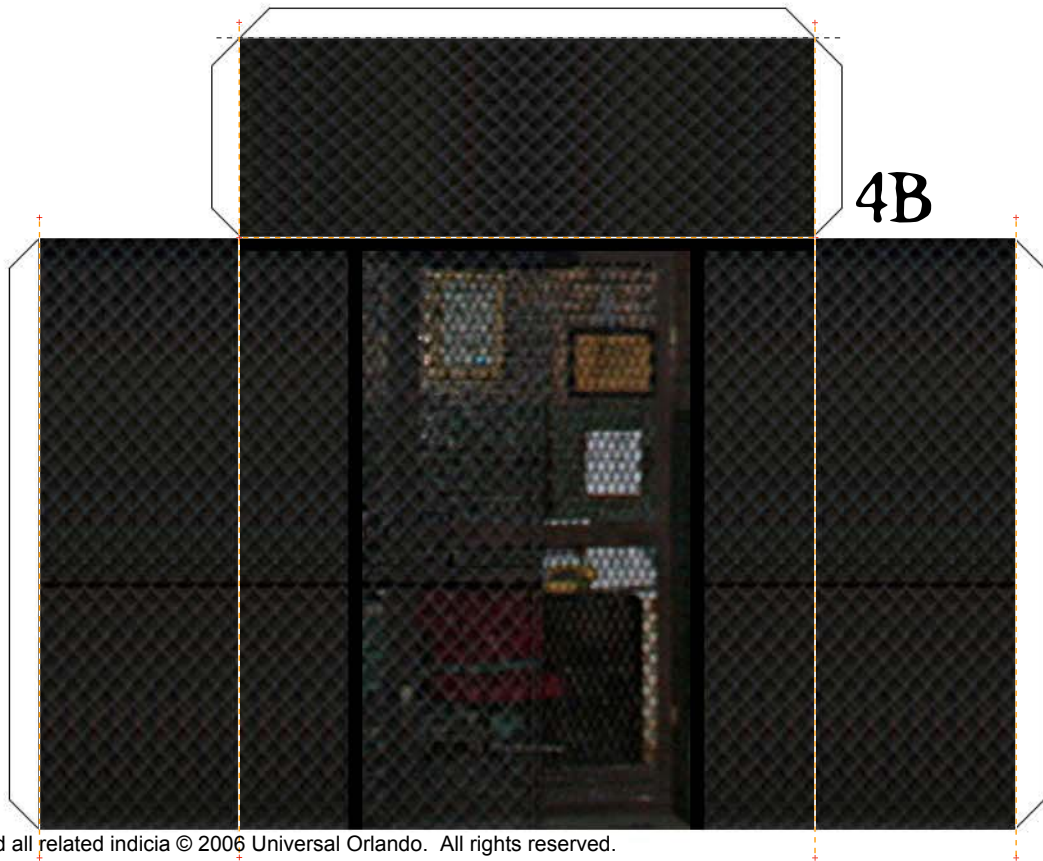
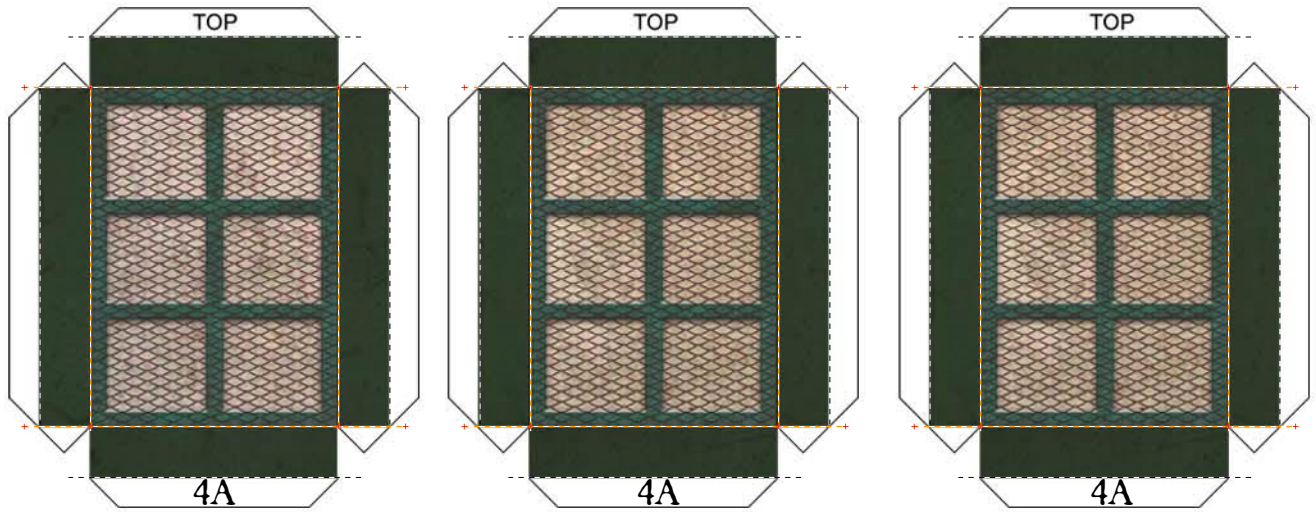
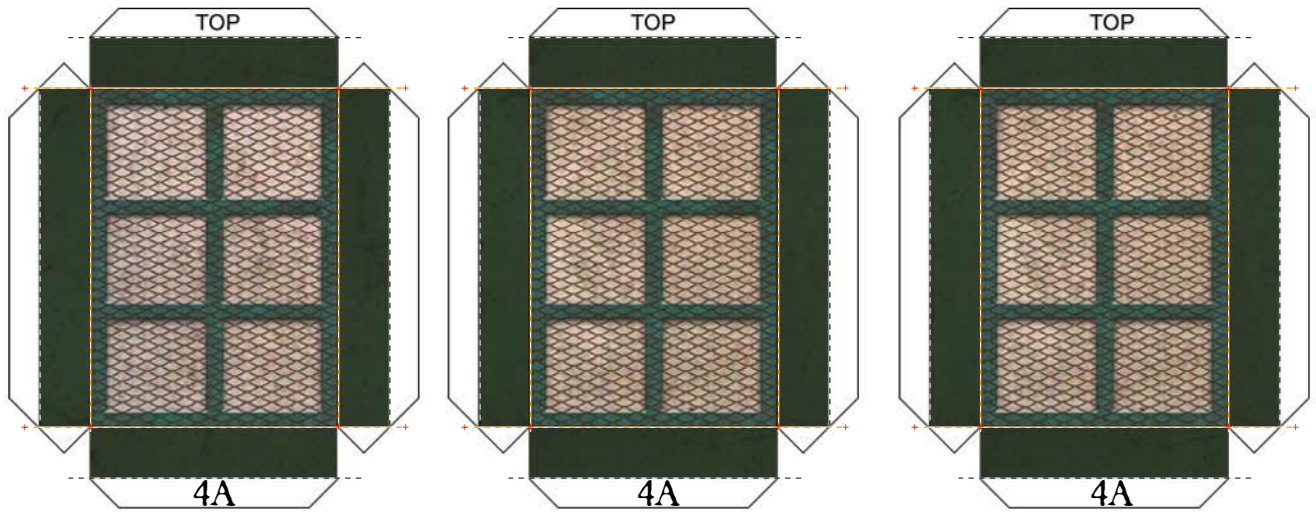
3A

3B



Universal elements and all related indicia (c) 2006 Universal Orlando. All rights reserved.



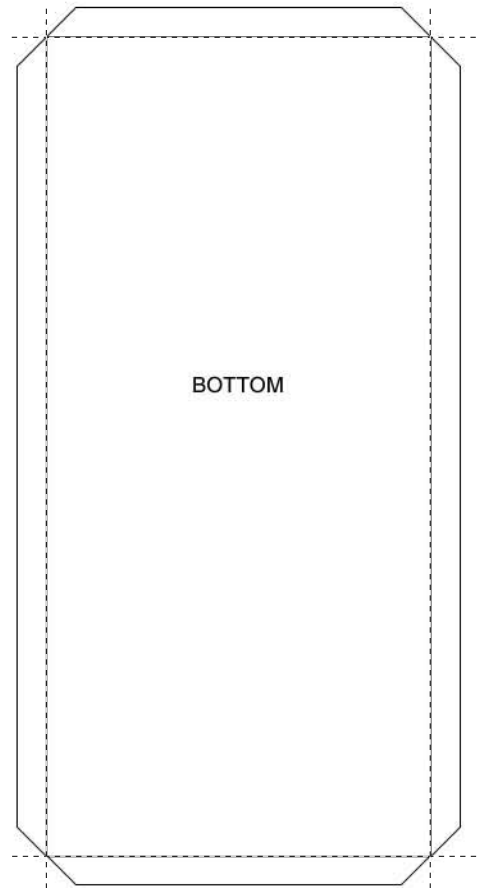
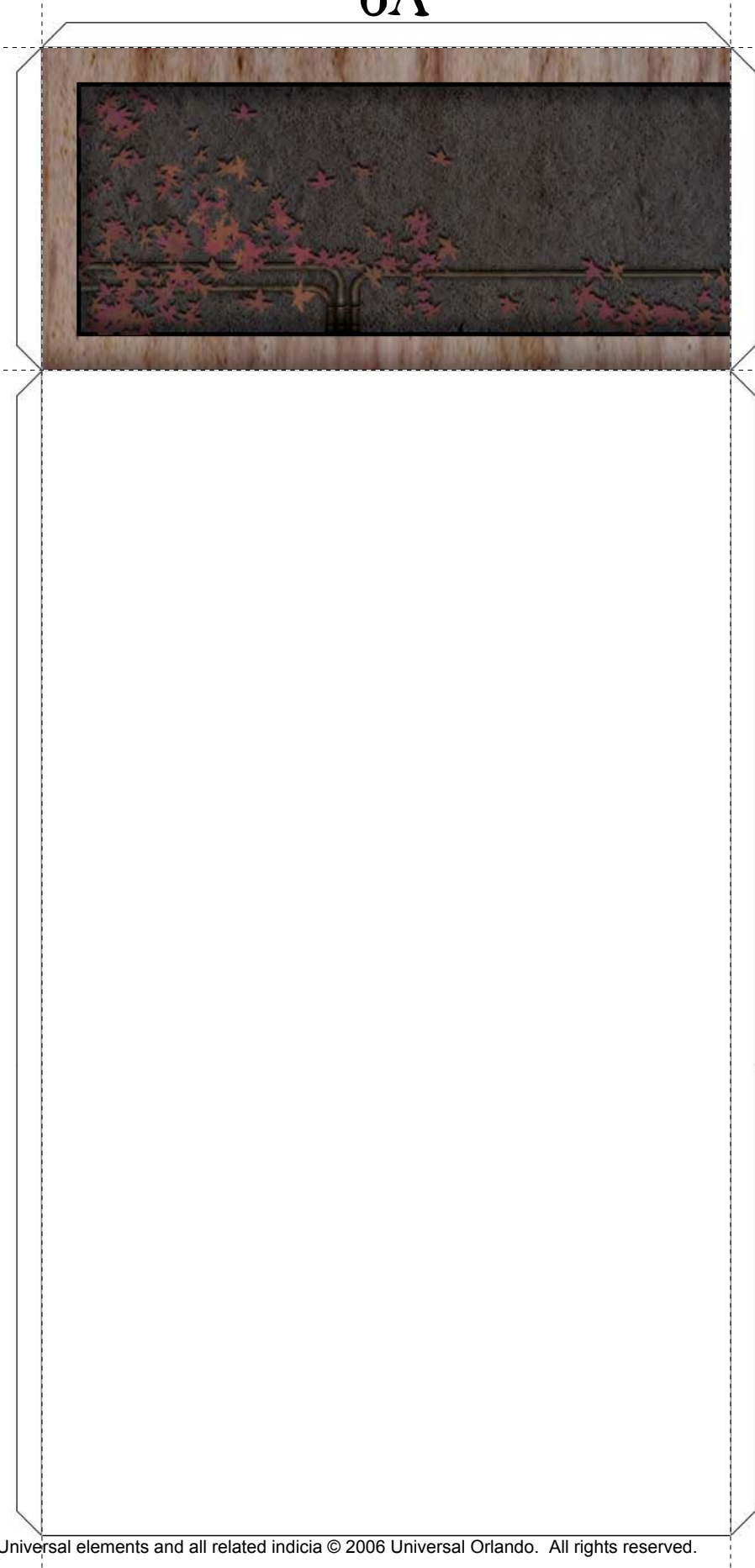




5A



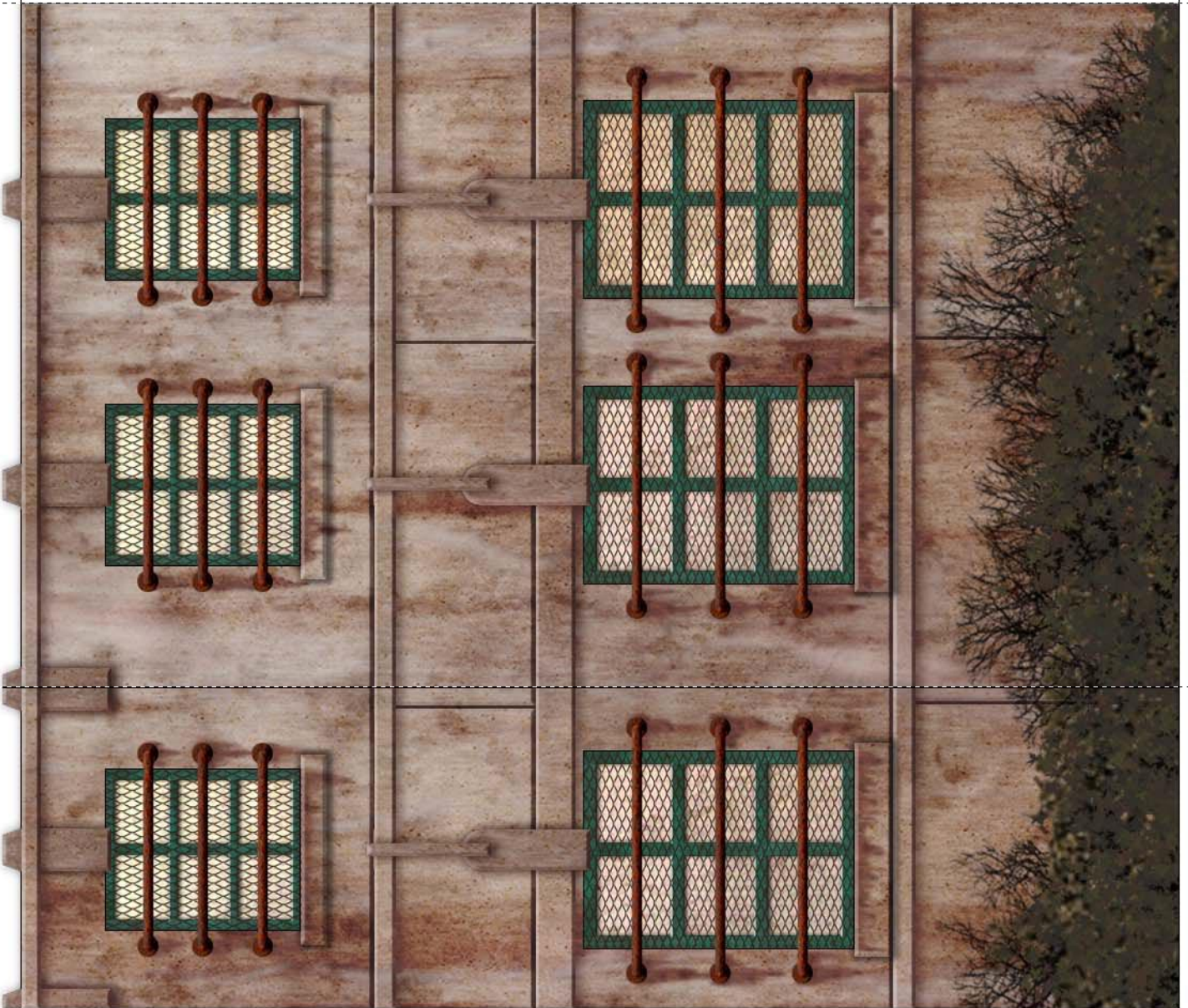
6A



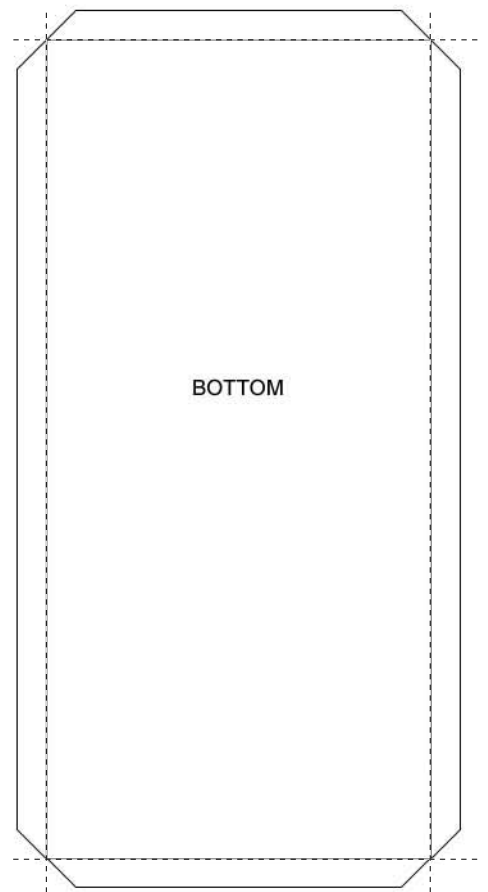
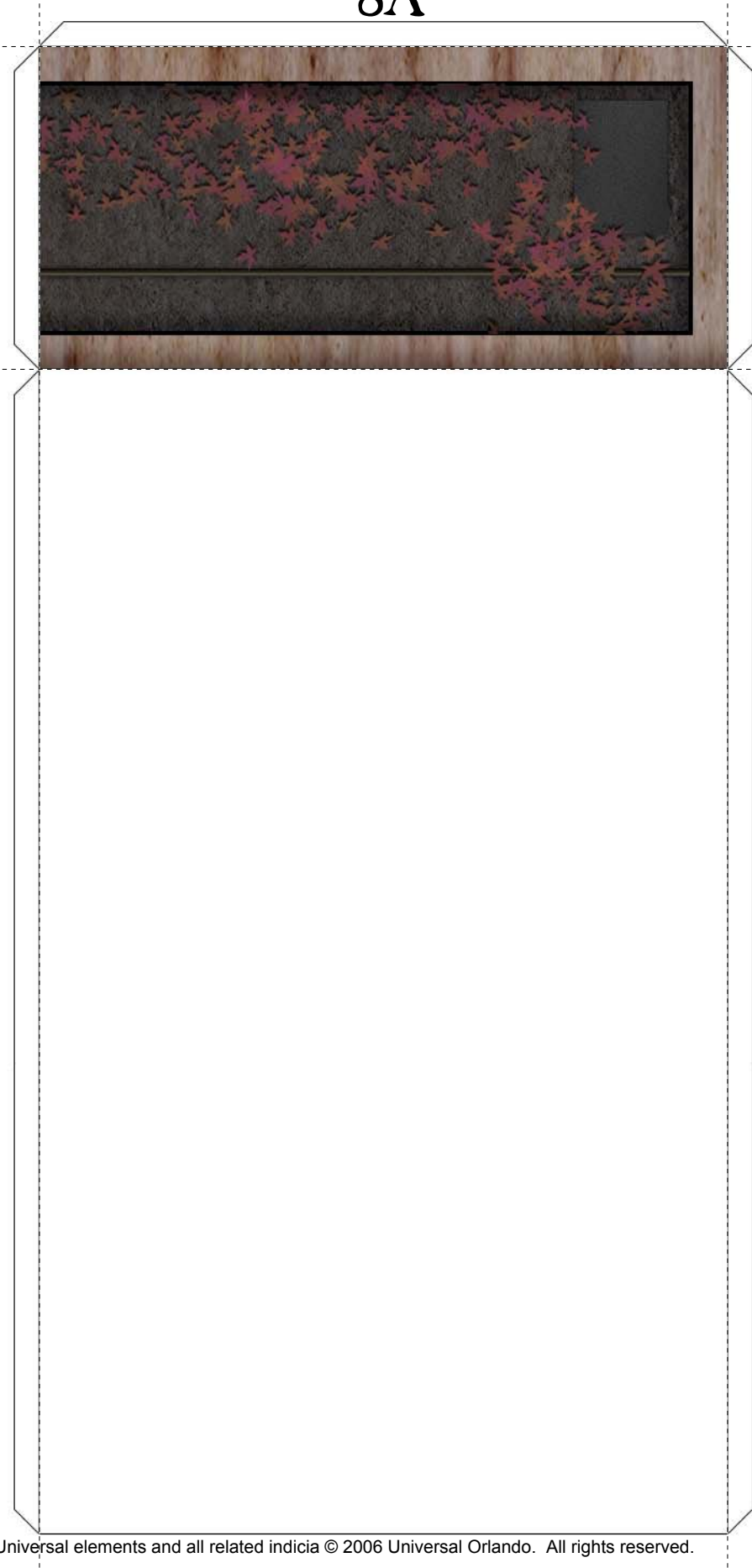
BOTTOM

6B

7A



8A



8B

# SHADY BROOK 9B

